

Sumitomo Electric's ITS solutions

Systems & Electronics Division
Sumitomo Electric Industries, Ltd.
Date: September, 2025

Company Profile

Company Name	Sumitomo Electric Industries, Ltd.
Established	April 1897
Capital Stock	¥ 99,737 million
President	Osamu Inoue
Employees	295,269
Subsidiaries & Affiliates	421 (Domestic [JAPAN] 103, Overseas 318)
Consolidated Business Results	Net Sales ¥ 4,679,789 million Operating Income ¥ 320,663 million

(As of March 31, 2025)

ITS solutions

Traffic Management Cloud

Control device



Traffic signal controller



AI-based traffic signal control
using car probe data

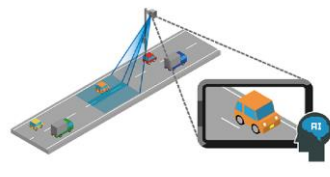
Roadside detector



Vehicle
detector

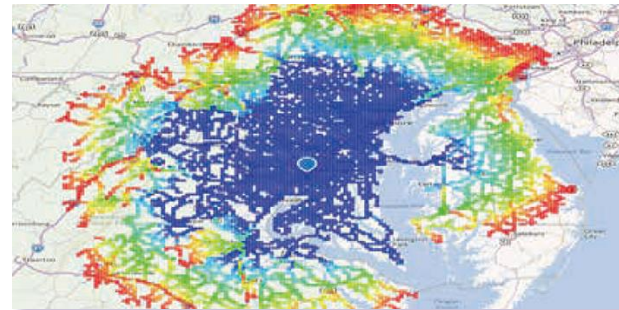


Pedestrian
detector

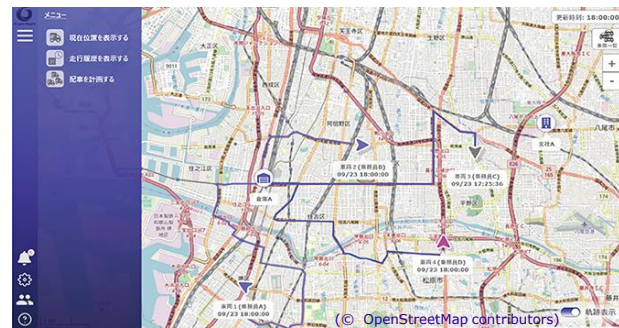


Automatic License Plate
Recognition (ALPR)

Telematics Cloud



EV Range Map



Intelligent Mobility Management System

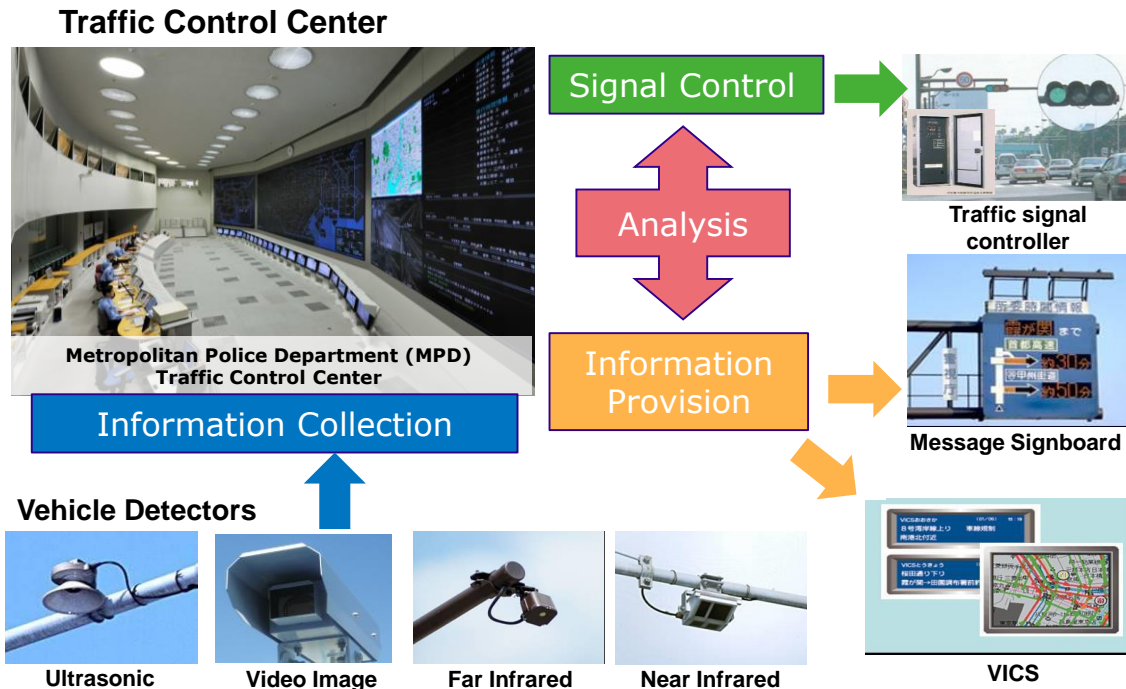
Traffic Control System

Overview

- Large-scale traffic management system that ensures safe and smooth road traffic
- Cutting-edge central control algorithm manages about 8,000 intersections

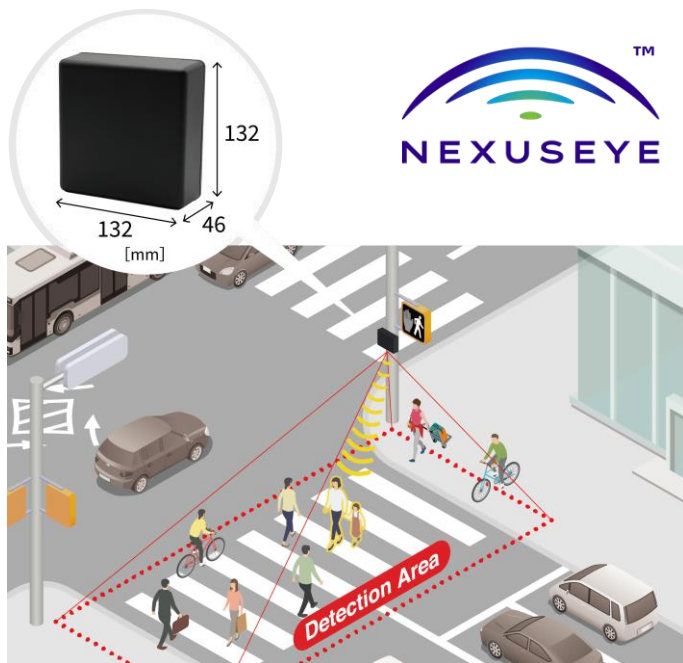
Features

- Provide total system solutions from center system to terminal devices, and engineering services
- The systems have been employed in many facilities including the Traffic Control Center of Tokyo Metropolitan Police Department, which is one of the largest center in the world



Radar for Detecting Pedestrians

Stable Detection at night or in the rain



Launched in the U.S. in 2024

- ◎ **Large detection area**
covers typical crosswalks with one radar [55 x 30m]
- ◎ **Detects a wide variety of targets**
pedestrians, cyclists, electric scooter users, and wheelchair users
- ◎ **Detects standing still Pedestrians**
- ◎ **Real-time detection & output**
position, speed, direction, and count
- ◎ **Easy installation**
- ◎ **Easy maintenance**
No need for frequent cleaning (no lens)



Connect with Innovation

<https://sumitomoelectric.com/>