

Fusion Sensor for Pedestrian Detection



Radar-camera integration delivers high-precision, high-dimensional detection

Feature Highlights

- Recognizes various pedestrian types, including people walking, cycling, using wheelchairs, e-scooters, or smartphones
- Covers a wide detection area
- Detects individuals directly below and behind the sensor
- Accurate detection in all conditions
- Easy installation and maintenance

Sensor
appearance



AI-based behavioral detection for smarter safety control

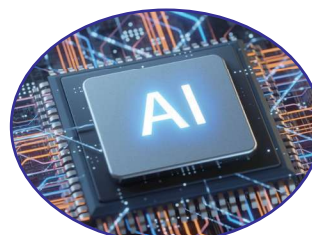
Use Cases

Traffic signal control applications

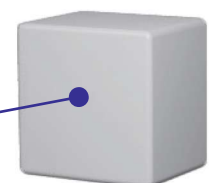
- Secures crossing time for elderly and disabled people
- Reduces traffic congestion by adjusting signals based on traffic volume
- Minimizes unnecessary waiting at signals

Integrates with Vehicle-to-Everything (V2X)

- Sends early warnings to drivers to prevent accidents
- Assists with autonomous driving by sharing real-time detection data



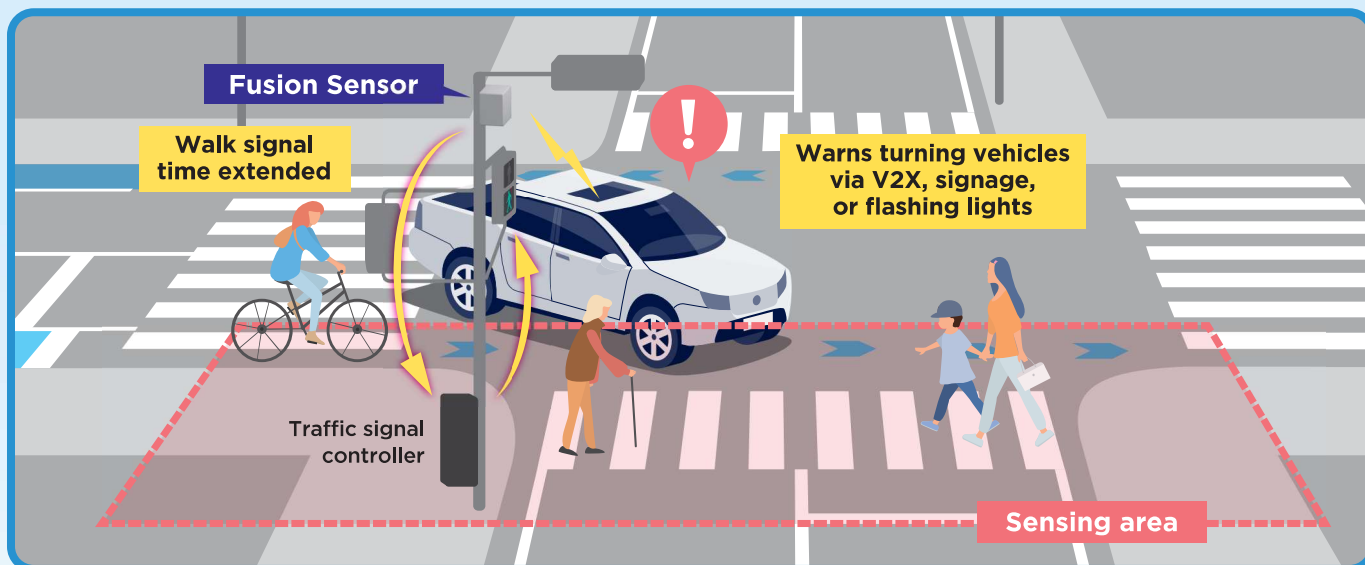
AI processing engine



Note: Product appearance and specification are subject to change.

Example Application

HOW FUSION SENSOR IMPROVES SAFETY AND TRAFFIC FLOW



Sensor technology comparison

A+: Excellent A: Good B: Fair C: Poor/None

Item	Camera	Radar	LiDAR	Fusion Sensor
Sensing area	B	A	A	A+
Shape and type detection	A	C	B	A
Detection in dark environments	C	A	A	A
Detection in adverse weather	C	A	B	A
Ease of installation	A	A	B	A
Maintainability	B	A	B	A

Main specifications

Item	Specification
Radar frequency	60 GHz band (ISM band)
Maximum detection area	180 feet x 98 feet
Output data	Pedestrian position, speed, direction, and type (update time: 100 ms)
Interface	Ethernet
Power supply	PoE
Operating environment	Operating temperature: -4°F to 122°F, Operating humidity: 5% to 95%
Cooling system	Passive cooling system (fanless)
Dustproof and waterproof	IP66

**Inquiries
About
This Product**

Sumitomo Electric Industries, Ltd.

Email: dxsensor@info.sei.co.jp

Wireless System Department,
Information Network R&D Center



Visit Our Website



Connect on LinkedIn



Contact Us