

Sumitomo Electric's ITS solutions

Systems & Electronics Division
Sumitomo Electric Industries, Ltd.
Date: September, 2024

Company Profile

Company Name	Sumitomo Electric Industries, Ltd.
Established	April 1897
Capital Stock	¥99,737 million
President	Osamu Inoue
Employees	293,266
Subsidiaries & Affiliates	415 (Domestic [JAPAN] 104, Overseas 311)
Consolidated Business Results	Net Sales ¥ 4,402,814 million Operating Income ¥ 226,618 million

(As of March 31, 2024)

ITS solutions

Traffic Management Cloud

Control device

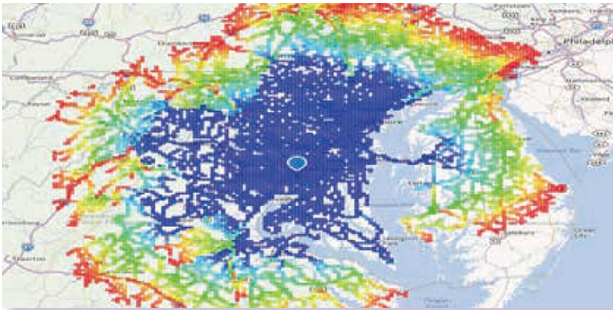


Traffic signal controller



AI-based traffic signal control using car probe data

Telematics Cloud

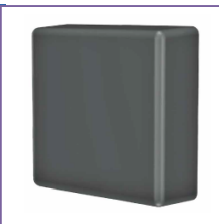


EV Range Map

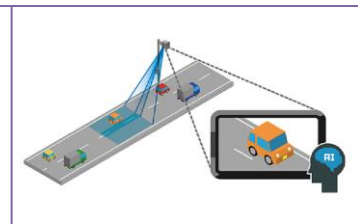
Roadside detector



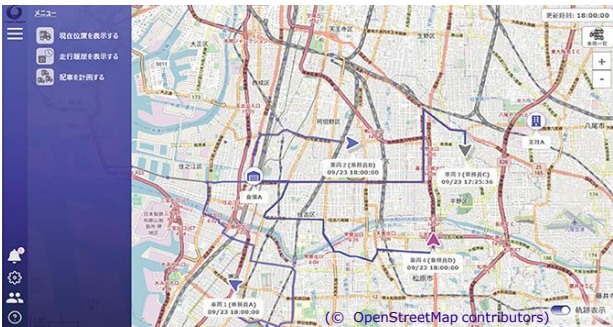
Vehicle detector



Pedestrian detector



Automatic License Plate Recognition (ALPR)



Intelligent Mobility Management System

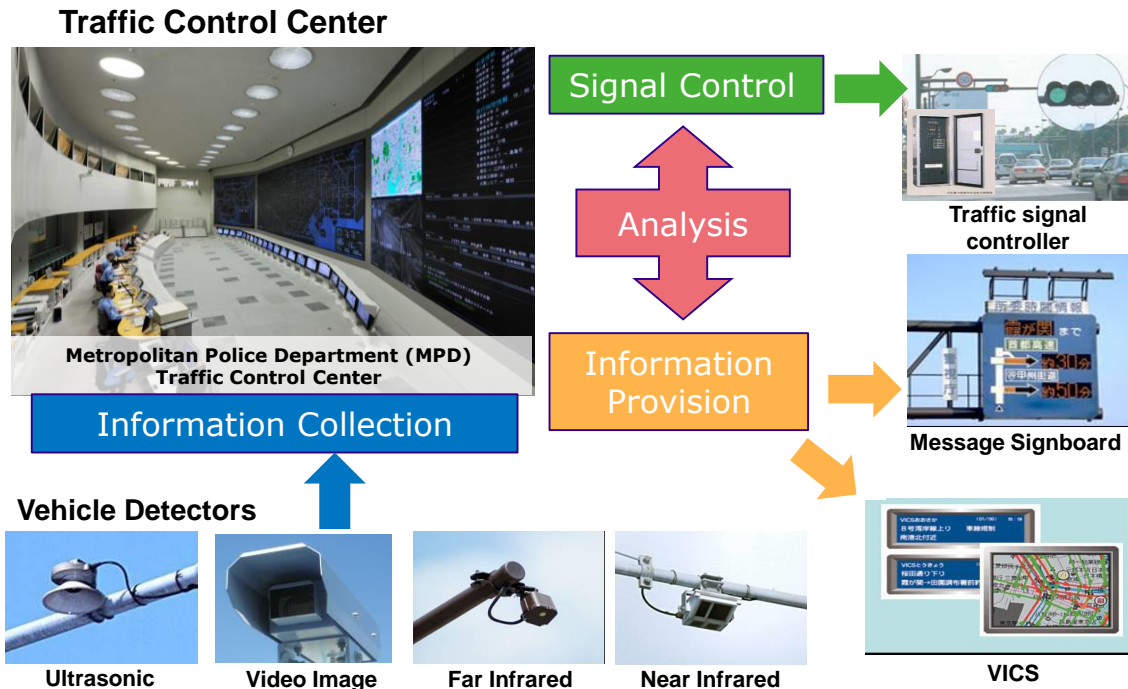
Traffic Control System

Overview

- Large-scale traffic management system that ensures safe and smooth road traffic
- Cutting-edge central control algorithm manages about 8,000 intersections

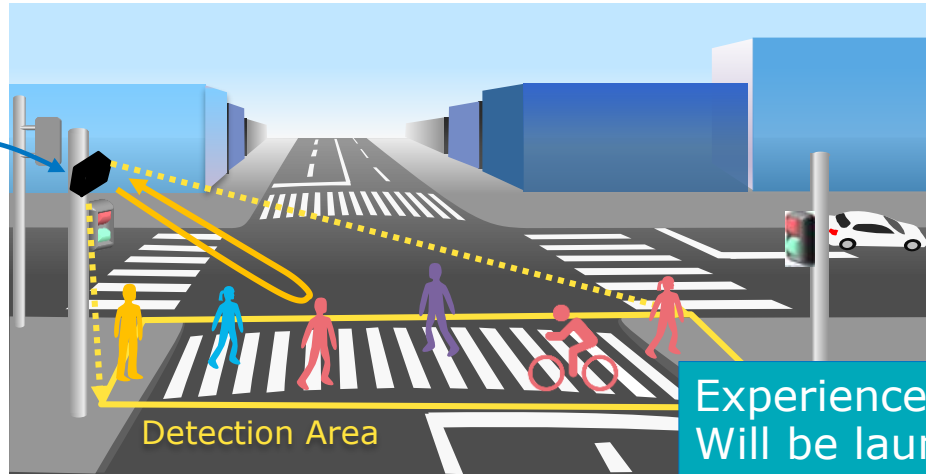
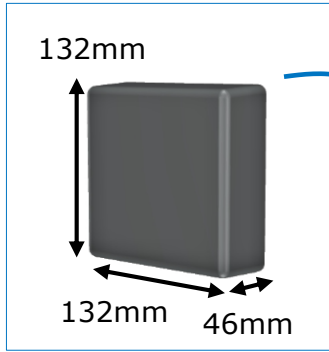
Features

- Provide total system solutions from center system to terminal devices, and engineering services
- The systems have been employed in many facilities including the Traffic Control Center of Tokyo Metropolitan Police Department, which is one of the largest center in the world



Radar for Detecting Pedestrians

Stable Detection at night or in the rain



Experience in Japan since 2017
Will be launched in the U.S. in 2024

◎ Large coverage range

Cover most of the crosswalks [55 x 30m]

◎ Continuous tracking

Even the radio wave is temporarily blocked

◎ Multiple

4 radars can be set without interference

◎ Near side detection

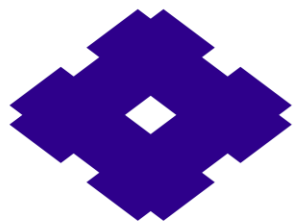
Can be installed to existing poles

◎ Stopping targets

Able to detect pedestrians standing still

◎ Compact and Inexpensive

Low cost for installation and maintenance



**SUMITOMO
ELECTRIC**

Connect with Innovation

<https://sumitomoelectric.com/>