

Sumitomo Electric's ITS solutions

Systems & Electronics Division
Sumitomo Electric Industries, Ltd.
Date: October, 2023

Company Profile

Company Name	Sumitomo Electric Industries, Ltd.
Established	April 1897
Capital Stock	¥99,737 million
President	Osamu Inoue
Employees	289,191
Subsidiaries & Affiliates	414 (Domestic [JAPAN] 105, Overseas 309)
Consolidated Business Results	Net Sales ¥ 4,005,561 million Operating Income ¥ 177,443 million

(As of March 31, 2023)

ITS solutions

Traffic Management Cloud

Control device

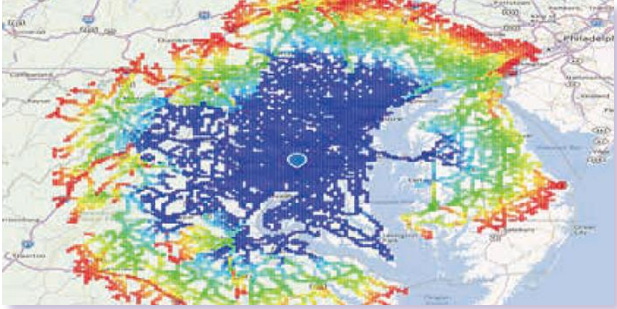


Traffic signal controller



AI-based traffic signal control using car probe data

Telematics Cloud



EV Range Map

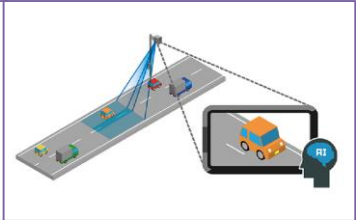
Roadside detector



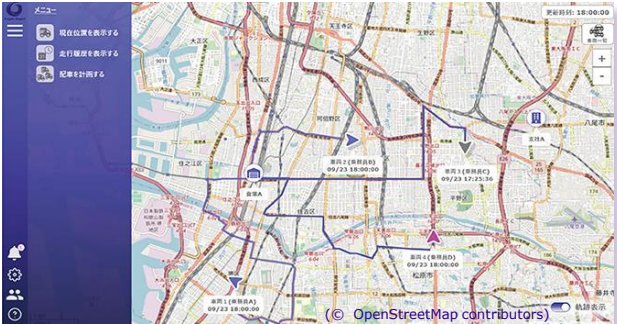
Vehicle detector



Pedestrian detector



Automatic License Plate Recognition (ALPR)



Intelligent Mobility Management System

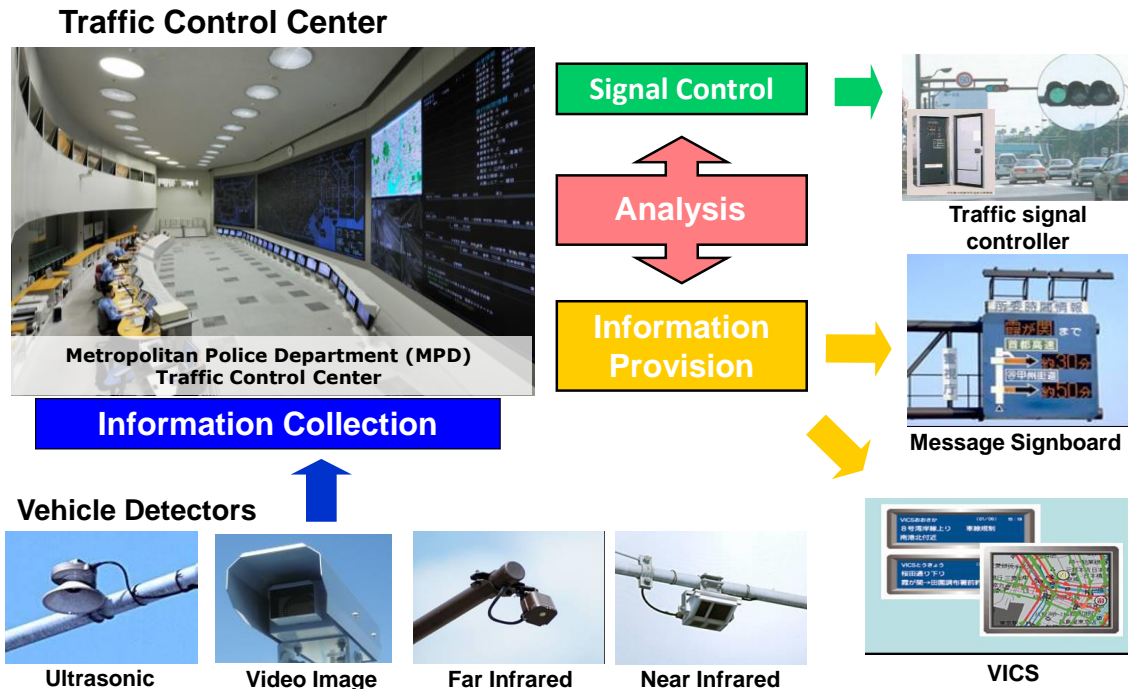
Traffic Control System

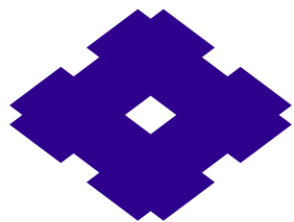
Overview

- Large-scale traffic management system that ensures safe and smooth road traffic
- Cutting-edge central control algorithm manages about 8,000 intersections

Features

- Provide total system solutions from center system to terminal devices, and engineering services
- The systems have been employed in many facilities including the Traffic Control Center of Tokyo Metropolitan Police Department, which is one of the largest center in the world





**SUMITOMO
ELECTRIC**

Connect with Innovation

<https://sumitomoelectric.com/>