

# Optical Reflector



**Low loss &  
high reflection**



**Choose your  
preferable  
outer housing**



**Deployed all  
over the world**



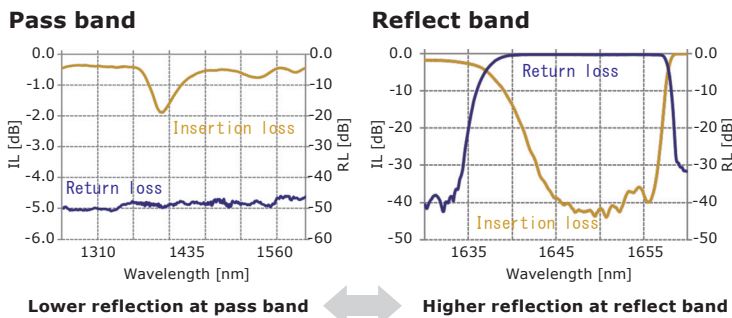
**Bi-directional  
available**

# Standard specification Specification is changed depending on your requests and conditions.

Parameters		Min	Max
Insertion loss [dB]	Pass band wavelength [nm]	1260~1360	1.0
	Reflect band wavelength [nm]	1460~1625	1.0
Return loss [dB]	Pass band wavelength [nm]	1645~1655	21.0
	Pass band wavelength [nm]	1260~1360	32.0
	Reflect band wavelength [nm]	1460~1625	32.0
			1.0*
Operational temperature [°C]		-25~+65	
Operational humidity [%RH]		5~95	

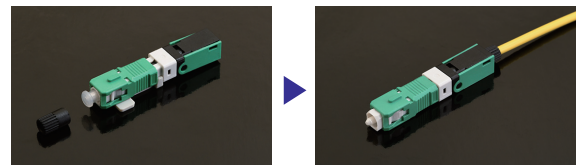
\* Field assembly mechanical splice type has 3.0dB (ITU-T G.652.D).

## Loss distribution spectrum

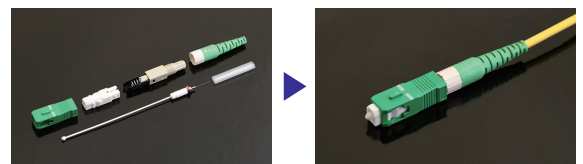


## Field assembly type

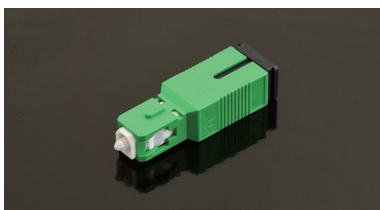
- Mechanical splice



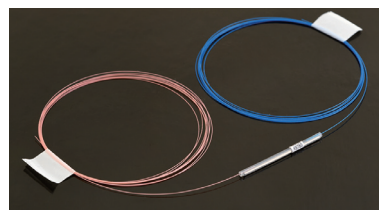
- Fusion splice



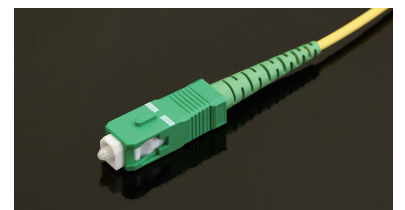
## Plug-Jack type



## Inline type



## Pigtail type



## Contact information

interconnect@info.sei.co.jp  
[https://sumitomoelectric.com/Remote\\_Monitoring\\_FTTx](https://sumitomoelectric.com/Remote_Monitoring_FTTx)



## Regional sales office

Japan  
 Sumitomo Electric Industries, Ltd. (Head Office)  
 (81) 3-6406-2799  
<https://global-sei.com/fttx/>

UK  
 Sumitomo Electric Europe Ltd. (UK Office)  
 (44) 208-953-8118  
<https://www.sumielectric.com/>

Italy  
 Sumitomo Electric Europe Ltd. (Italy Office)  
 (39) 024-963-8601  
<https://www.sumielectric.com/>

USA  
 Sumitomo Electric Lightwave Corp.  
 (1) 919-541-8100  
<https://sumitomoelectriclightwave.com/>

Brazil  
 SEI Brazil Optical Solutions, Ltd.  
 (55) 15 3416-7100  
[vendas@seibrazil.com.br](mailto:vendas@seibrazil.com.br)  
<http://www.seibrazil.com.br/>

China  
 Sumitomo Electric Trading (Shenzhen) Co., Ltd.  
 (86) 755-8270-6880  
<http://www.seac-china.com/>

Hong kong  
 Sumitomo Electric Asia, Ltd.  
 (852) 2830-7474  
<http://www.seac-china.com/>

Thailand  
 Sumitomo Electric (Thailand) Ltd.  
 (66) 2-260-7231-5  
<http://www.set-th.com/>

Singapore  
 Sumitomo Electric Asia Pacific Pte. Ltd.  
 (65) 6261-3388  
<http://www.seap.com.sg/>

Philippines  
 SEI (Philippines) Incorporated  
 (63) 2-811-2755-56  
[sales-admin@seiphilippines.com.ph](mailto:sales-admin@seiphilippines.com.ph)

India  
 SEI Trading India Pvt. Ltd.  
 (91) 124-4577470  
<http://www.sumitomosplacers.in/>