

Intelligent Mobility Management System



Systems & Electronics Division
Sumitomo Electric Industries, Ltd.
Date: October, 2021

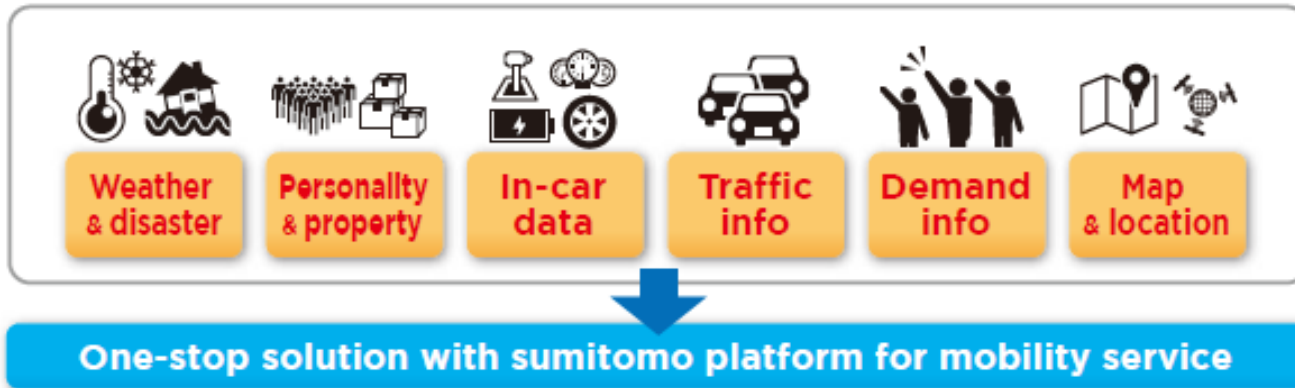
Intelligent Mobility Management System



Providing Platform for Mobility Service

People have come to need various information due to the diversification of travel. To meet their needs, we have begun providing platforms for mobility service to various business companies, such as transportation, logistics, and tourism.

Ex) Efficient Operations of Shared buses, Optimal Plans of Logistics, Travel Planning Advice, etc.



Roadmap for Mobility Management

We have been providing many systems to transport companies (more than 130 companies). By making use of the experience, we have just started providing "Eagle Sight", a new mobility management system, to all service providers that transport people and baggage.

<Roadmap of Sumitomo's Mobility Management Systems>



Management of Vehicle Location and Status



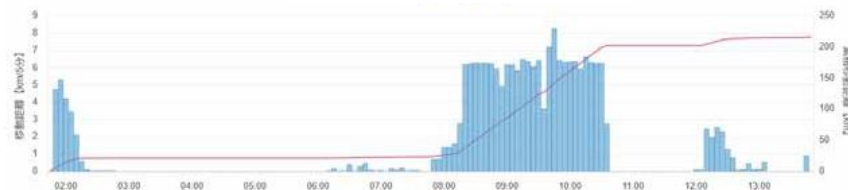
Overview

1. Displays your vehicles' position on the map with the information transmitted from the GPS on-board units.
2. Displays your vehicles' status and traffic condition on the map for advanced operations.
3. Analyses operational efficiency of the vehicles by displaying driving history and outputting historical data.



GPS on-board unit

Mileage graph

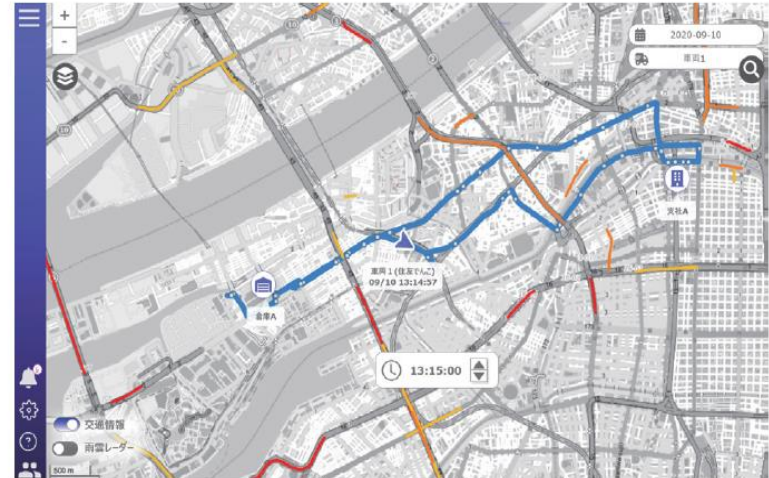


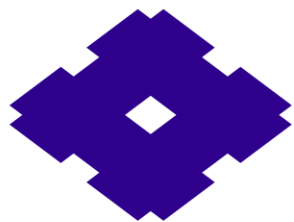
Management of Vehicle Operation



Overview

1. Proposes an optimal operation plan based on amount of baggage, number of vehicles, and traffic condition.
2. Supports reviewing plans during operation such as changing routes for ride-hailing.
3. In cooperation with "Management of Vehicle Location and Status", detects delayed vehicles or analyzes the causes of operational delays and inefficiencies by using historical information about travel or traffic condition.





**SUMITOMO
ELECTRIC**

Connect with Innovation

<https://sumitomoelectric.com/>