

OTDR Trace Report

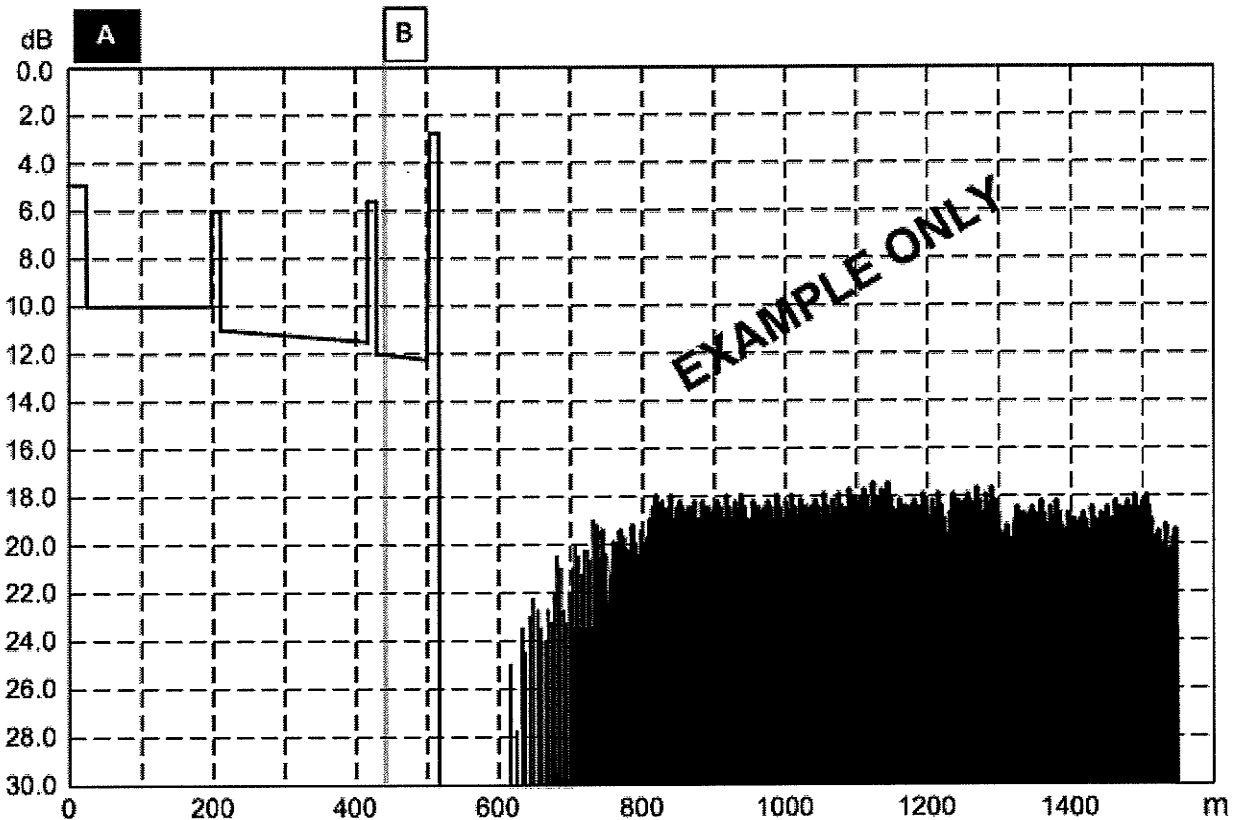
25 May 2009

Fiber #: 1
Wavelength: 1300 nm
Cable ID: DC1A – FTUB-1
Cable Type: FB18M6 ABF

Test Site: Bldg A MDF
Far Site: Bldg B IDF
Tested By: T. Jones
Test Date: 23 May 2009

File: Bldg A MDF – Bldg B IDF
Comment: N/A

Module:	M600-MM1	Auto Events:	Off	Cursor A:	200.4 m
Port:	Multimode	Loss Thresh:	0.1 dB	Cursor B:	500.1 m
Range:	8,000.0 m	Refl Thresh:	-65.0 dB	A-B Distance:	299.5 m
Pulse Width:	400 ns	End Thresh:	6.0 dB	A-B Loss:	1.01 dB
Averages:	256	Group Index:	1.47100	A-B Loss/km:	----
Auto Setup:	Off	BackScat Coef:	-83 dB	Format:	169



Event Table		
Number of Events: 0	Link Loss: N/A	Link Length: N/A

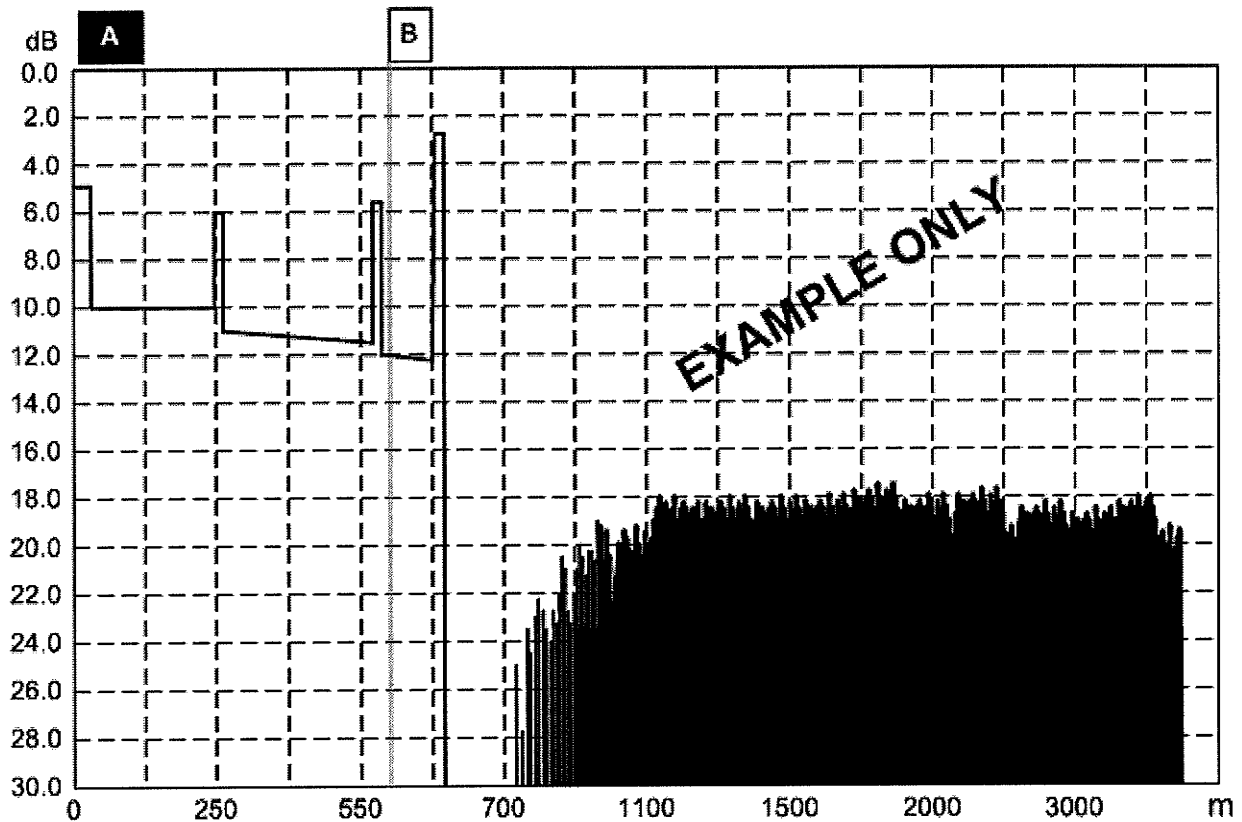
OTDR Trace Report

25 May 2009

Fiber #:	1	Test Site:	Bldg A MDF
Wavelength:	1550 nm	Far Site:	Bldg C IDF
Cable ID:	DC1A – FTUC-1	Tested By:	T. Jones
Cable Type:	FB18SX ABF	Test Date:	23 May 2009

File: Bldg A MDF – Bldg C IDF
Comment: N/A

Module:	M600-SM1	Auto Events:	Off	Cursor A:	250.4 m
Port:	Single-mode	Loss Thresh:	0.1 dB	Cursor B:	570.2 m
Range:	8,000.0 m	Refl Thresh:	-65.0 dB	A-B Distance:	319.8 m
Pulse Width:	400 ns	End Thresh:	6.0 dB	A-B Loss:	1.39 dB
Averages:	256	Group Index:	1.47100	A-B Loss/km:	-----
Auto Setup:	Off	BackScat Coef:	-83 dB	Format:	169



Event Table		
Number of Events: 0	Link Loss: N/A	Link Length: N/A